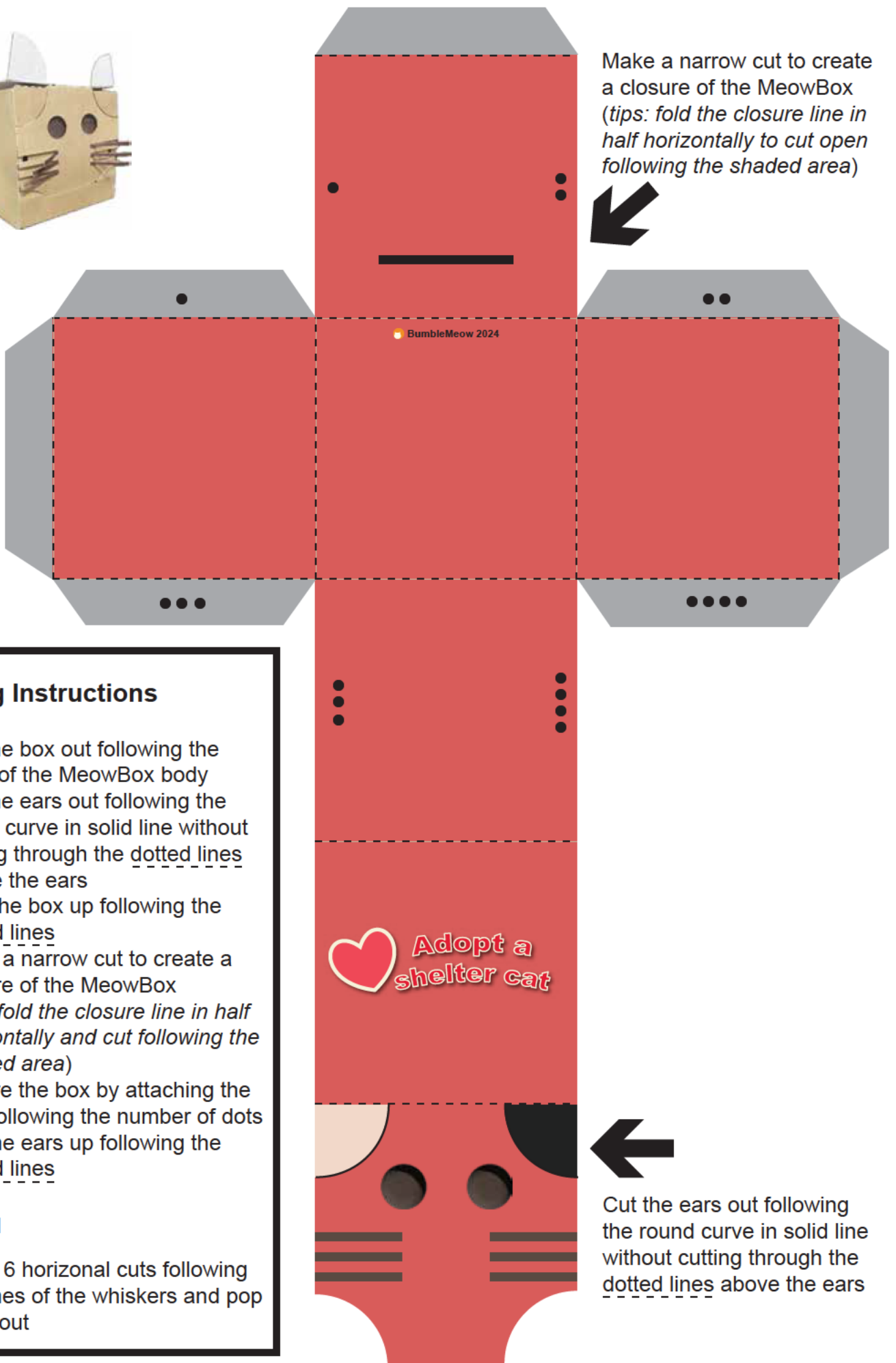




Make a narrow cut to create a closure of the MeowBox
(tips: fold the closure line in half horizontally to cut open following the shaded area)



Folding Instructions

1. Cut the box out following the edge of the MeowBox body
2. Cut the ears out following the round curve in solid line without cutting through the dotted lines above the ears
3. Fold the box up following the dotted lines
4. Make a narrow cut to create a closure of the MeowBox
(tips: fold the closure line in half horizontally and cut following the shaded area)
5. Secure the box by attaching the side following the number of dots
6. Flip the ears up following the dotted lines

Optional

7. Make 6 horizontal cuts following the lines of the whiskers and pop them out



Cut the ears out following the round curve in solid line without cutting through the dotted lines above the ears